



Dobermann Rescue UK and Europe (DRUE) Presents

DRUE LIFE



This month's cover girl is Tallis.

She is an entire bitch who is 22 months old.

She is very friendly towards people, and is fine with dogs once she gets over the initial meeting, she can be shouty on the lead.

She has lived with another dog so no reason why she cannot do so again, and she is friendly towards cats. She has not lived with children, so 12 years and over who are dog savvy.

May 2024

Issue 17

Welcome from the editor

As the days grow longer and the sun invites us out to bask in its warmth, we at DRUE are thrilled to once again announce our annual Family Fun Day and Dog Show (all breeds welcome).

This great event is set to take place on 24th August 24, at the super location of Siddington Village Hall, SK11 9JR.

We were proud of our event last year, it had a super turnout and was a great success for DRUE. Now this year

promises to surpass that, as we're going all out to ensure a memorable experience for both humans and their furry companions. We have a larger venue, more stalls and activities, and of course a big family fun dog show.

We look forward to seeing people bringing all types of dog breed so what ever size or type of dog you have, do bring it along. Save the date and do come and join us.

Continue on through the pages of this issue to read how Helga is getting on in her new life. She was a big favourite of the team and I for one, remember fondly being taken for a walk by her!

This month we feature 2 of our fabulous long term volunteers, husband and wife team 'Ian & Tracy'. They do such amazing work for DRUE.

Finally check out the photos of our "Doggy days out". Our DRUE team take them out everyday and they have so many adventures in some amazing places. Read on and enjoy.

Inside this issue:

Dogs Adopted	2
Dogs looking for their new home	3
It's a dog's life – life after rescue	4
Spotlight on our volunteers	7
Doggie days out	10
The big £2 pledge	13
3 days, 3 weeks, 3 months	14
DRUE info	15

Dobermann Rescue UK & Europe

SAVE THE DATE

24th AUGUST

2024

We will be holding our annual meet up and fun dog show at Siddington village hall SK11 9JR

Going to be good, details to follow

Dogs who found their new forever home



Scooby



Max



Pablo



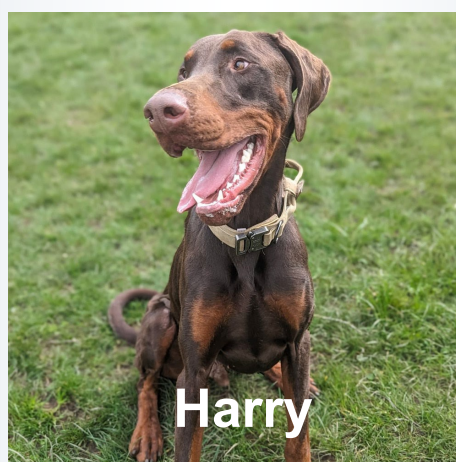
Raven



Dizzy



Damon



Harry



Dotty

We have dogs still looking for their forever home, these are featured on the following page. If you are able to give any of our dogs a loving home please check out our current dogs and complete an application on our website at:

www.dobermanmannrescueuk.co.uk

Please help me, I need a home !



Tallis



Patience

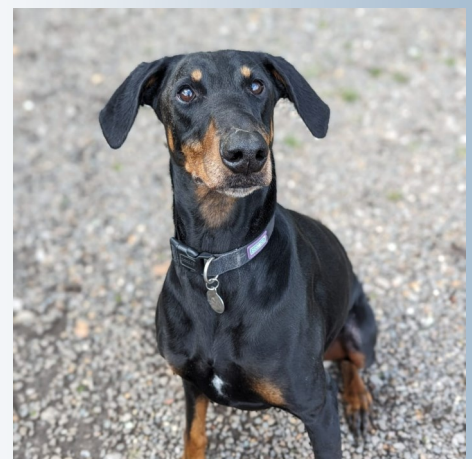


Uma

Arrived with us in a very poor condition and is now receiving treatment and the best of care. She will not be ready for rehoming until suitably recovered



Pepper in foster



Loki

Can you give one of our dogs a home?
Find out more about them and complete an application on
www.dobermanmannrescueuk.co.uk

Life after rescue — “Helga”

Editors note

I remember dear sweet ‘Big Helga’ when she arrived at DRUE, I had the pleasure of being taken for a walk by her (yes, she took me!). She had the most adorable face and could give you a ‘please find me a home’ look, with the saddest of eyes. I was really smitten and enjoyed each encounter I had with her.



It is a pleasure to hand over now to Lena to tell Helga’s ‘life after rescue’ story with her new family, where she is living her best life.

Helga’s story

Helga’s story cannot be told without her brother Clifford. We have had our Dobie boy Clifford for about three years before we adopted Helga. Clifford has always been a social boy, but shortly before we found Helga, he met another big dog (Swiss Mountain Dog) with whom he played like never before. They were wrestling, running, sharing toys and it made us think we should get a companion for Clifford at home.

We were already following DRUE’s Facebook page, as we were in awe with what they were doing and loved watching the stories of successful adoptions.

One evening, we were scrolling through Facebook and saw this adorable, sad face with the title: “Our poor Helga looks so sad, her

prospective new family changed their mind” and it was at that moment that we fell in love with her. In her description it was said that she loves playing with tennis balls – which was Clifford’s favourite activity as well. We filled out our application immediately and hoped that we would be able to meet sweet lady Helga ...



Our application was successful and just a week later we were on our way to meet Helga. It was a three-hour drive, and when we finally arrived, Helga was not interested in us at all – even though we tried to bribe her with treats.



We attempted to take her on a walk together with Cliff, and the friendly DRUE team went inside so Helga wouldn’t be distracted. Helga, however, is stubborn. Instead of walking with us, she just sat down and stared at the house where her ‘family’ was. This just goes to show what a lovely team the DRUE team is! We still loved her and decided to take her home.

This was a turning point for Helga, because as soon as we opened that car door she jumped straight in the car and even got to ride in Cliff’s spot. It was as if something in her had clicked and was saying “You’re going home now”.



We hadn’t driven for 10 minutes before she was snoring in the backseat.



Helga is a whirlwind. When we finally came home, she was super excited, she actually peed on the carpet. Then she did something we never expected: She came over to me and sat on my lap, as if she were a tiny puppy.

That trust and love made us realize how caring she is. It was an emotional rollercoaster from there.



Life after rescue — “Helga”



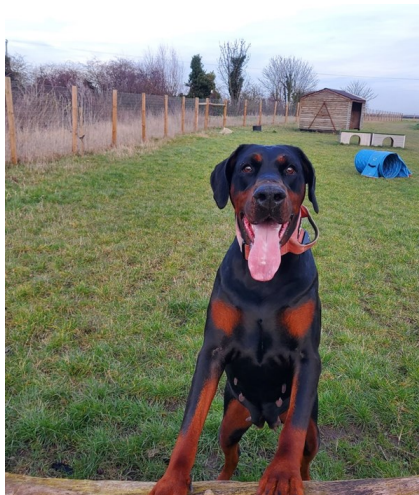
Helga was found on the street and we don't know how long she'd been there or what her previous life was like. For Helga everything was food: the trash, the toys, the pillows, the birds outside!



Helga catching rain

Once she got comfortable with us, she took us on walks, she barked at every villager, and was generally very stubborn. It took a lot of training, but as she is eager to please and VERY food driven, she did very well in our training sessions. She went from pulling like a train to loose lead walking in a few sessions.

She showed some separation anxiety in the beginning, but we were able to teach her that we would never leave her for good – most of our pillows got to feel it though. Helga has had puppies before so she was a big girl when she came home with us and wasn't able to run as much as Cliff. We started slow, but managed to build her capacity to where we are now jogging with her. Just a few weeks ago she did her first proper run for 1 ½ miles.



My favourite development in Helga, however, is her body language, especially in her tail.

When she first came to us, her tail was always hanging down. I remember watching her one day when her tail slowly stood up. And then a few days later she gave a tiny little twitch as if to say 'I am getting comfortable'. And then finally we got the first proper tail wags showing us how happy she was. Now that tail will barely keep still.



Other than climbing up onto our laps or into our bed at night, Helga loves being outside. Her favourite activity is to run with birds, which she will do until she cannot move anymore. Most days we have to stop her before she exhausts herself. But the best walk for Helga was her first day in the forest. It was a nice summer morning and we decided to skip the park and let the dogs run in nature. She must've smelled some deer or birds because she ran off into the trees, but instead of running away, she just started zooming in circles – she was so happy! Getting her to come back to us was a bit of a challenge as she was going wild – just running and running in circles.

There are many reminders of Helga's past. When we first brought her home she was very big and unfit. We have exercised her as well as put her on a diet to ease her into a healthier life.

Another reminder is her skin. She had bald patches on her legs from sleeping on concrete, which are slowly fading away.

Her chin was covered in spots, which we treated with face wipes. Her face will always have a few spots but it has gotten a lot better.



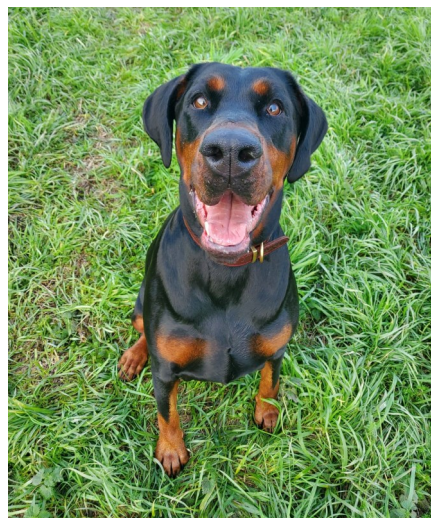
Life after rescue — “Helga” cont.

I think it is important to remember her past – no matter how accustomed she may be to our routines, she has had a rough life and we are trying to make her future a million times better.

Something that we find very fascinating is how much Helga looks up. We have never seen a dog so interested in the sky – but that’s where the birds are, so Helga’s eyes are always up, not her whole head though, she just kind of moves her eyes upwards without tilting her face. At home, she will get on the couch and look outside to watch the birds for hours.



Helga — before adoption



Helga — Now

Over the past year that we have had her for, she has brought so much love into our life.

She always wants to touch one of us and sleeps on our laps every evening. When we have company over and she gets tired, she will climb up onto our knees with her front legs to let us know it is cuddle-time.

Everything and everyone has to be cleaned by Helga – even the cat. Cliff was never much of a snuggler, but he loves his Helga cuddles – especially when she’s cleaning his ears.

Quick fire interview — Helga — Approx 5 to 6yrs old

Q. How long has she been in your life. A. Just over 1 year.

Q. Favourite food? A. Anything her mouth can reach.

Q. What makes you laugh about her? A. She jumps up and around in circles like a bull to catch the rain.

Q. Does she have a naughty side? A. Somewhat. She is stubborn and has days where she is a little devil. But when you tell her off, she makes those puppy eyes and we cannot stay mad at her.

Q. If she was a famous person who would she be like? A. Keanu Reeves. He stars in action movies and plays the tough guy, but when reading about him as a person, he seems like a sensitive and caring guy, just like Helga. She acts tough, but she is the biggest sweetheart (and afraid of the dark!!)

Q. Best memory/adventure with her so far. A. Helga makes any day out an adventure. One of my favourite moments was when she met a puppy at the park. Helga is shy around other dogs, and tends to bark at them before letting them near her. When she met the puppy, however, she barked to warn him and he barked back, in a high pitched little puppy yelp. Helga stopped for a second and then barked back but every time she barked she made it a little higher frequency until her bark matched the puppies yelp. She has done this several times now with different dogs where she tries to match their bark and it is absolutely adorable.

Spotlight on our volunteers “Ian & Tracy”

Once again we put the spotlight on our volunteers, this time our husband and wife team, Ian and Tracy Tyson. Ian and Tracy are long term dedicated volunteers whose commitment to DRUE has been second to none. Ian is also one of DRUE's Trustees. This is their story as told by Ian:

Background

Tracy and I have always shared a profound love for dogs and we've had dogs throughout our lives. Staffordshire bull terriers have accompanied me through my life, Tracy's companionship has been with German shepherds and a Dobermann. Following the passing of my beloved Staffy this led us to seek out a new member of our family, Tracy said she'd always preferred large breeds, so we started looking at large breed rescues. This quest brought us to Dobermann Rescue UK and Europe (DRUE), which was right on our doorstep and was a sanctuary for these lovely Dobermanns in need of a second chance.



Our own DRUE dogs

Our journey began with Cooper, a Cypriot street dog, who was approximately six months old and already bearing many scars and incredibly underweight at 19kgs. You could see all his ribs and his spine. We bought him a coat for walking so that people didn't think that we were neglecting him.



Cooper was over in Cyprus, awaiting his forever home, under the care of Graham Shackleton at Rescue & Rehoming.

We applied for him but had to wait for him to be flown over which was approximately 7 weeks, and the anticipation of welcoming Cooper into our lives led us to a profound commitment: volunteering at the rescue! So, while we were waiting, we decided to walk the others in the rescue as there weren't many other volunteers at that time. That was five years ago and we have dedicated almost all of our Saturdays, and more recently Sundays as well, to the welfare of these dogs.



Cooper settling in to his new life

Then came Hetty, she had lived with her breeding partner and their 2 pups in Cyprus. When the owner died and his wife couldn't look after them they went to Graham Shackleton at Rescue & Rehoming Cyprus, who once again came to the rescue and took them in.



From there, Graham liaised with DRUE and Hetty flew to the UK where she became our second DRUE rescue and Cooper's side-kick.



Hetty camping

We've had Hetty nearly 3.5 years, now she was 5 when we got her. So she is 8.5yrs old now and Cooper is 5.5yrs old.



Spotlight on our volunteers “Ian & Tracy”

Our journey: Cooper & Hetty

Our journey with Cooper and Hetty has led to many adventures that we treasure.



They have been our companions on various escapades, from camping under the stars to chilling out along the waterways on a canal boat. Their presence has become an indispensable part of our lives.



Adopting these Dobies has not been without its challenges. As rescues, they arrived with their own set of complexities, carrying the scars of their previous lives. Their difficult moments, while frustrating, have been a reminder of the patience and understanding required when welcoming a rescue dog into your home. It's a truth universally acknowledged amongst rescue pet parents that these animals need time — time to adjust, to trust, and to fully open their hearts to their new family.

When we made the promise to integrate them into our lives, we did so with the full understanding of the commitment it entailed. Giving up on them was never an option we entertained. Through patience, love, and stability, we have witnessed a remarkable transformation in them. They have thrived and now reward us exponentially with their loyalty, affection, and the joy they bring to our lives daily.



They have not just become a part of our life; they have enriched it beyond measure, and along the way taught us about resilience, love, and the beauty of second chances.



Typical day at DRUE

A typical day at the rescue for me involves managing the surrenders and adoptions, I've also transported dogs (collecting them from surrenderers and taking them to the vets), handling their microchip scanning and registration, and enjoying getting to know the dogs more personally when taking them

out for their walks and free running in the secure paddocks.

Tracy with equal dedication, takes on the task of cleaning out the kennels, cleaning all the food bowls, weighs out the dogs foods, sorts which dogs are on raw food and those that require medication, gives them fresh bedding and ensures each dog is nurtured and comfortable.

Challenges

The emotional toll of witnessing owners part with their beloved pets is immense, it is absolutely heartbreaking seeing owners have to hand over their babies.

It will never get any easier as we both often breakdown with them as we feel their heartache, all we can do is reassure them that we will get them the best loving home for their dog that we possibly can. Being part of this process motivates all of the DRUE team to do their utmost best for the dogs and ensure the promise of a loving new home is fulfilled.

Challenges also arise in dealing with dogs that bear the scars of their past.



Torro, for example was an absolute nightmare, he came to us as an underweight, anxiety ridden soul who had known little stability, he was handed to us after being passed around on gum tree.

For well over a year we worked with him to understand and calm his fears, he was eventually rehomed to a wonderful lady who owned a small holding and could offer the patience and love he desperately needed.

Spotlight on our volunteers “Ian & Tracy”

Additional support

To help the long-term dogs who are special in terms of their needs and anxieties, our efforts extend beyond the confines of the rescue, we have brought some of our long-term residents home to spend nights with us in our campervan to try and give them a bit of respite and also to get some insight into their behaviour outside of the kennel environment.



DRUE rescue
'Bobby' camping

Rewards

The rewards are immeasurable. Witnessing the transformation of dogs, from the day they come in as fearful, badly abused or shutdown, right through to happy and loved when they find their forever home, is a deeply moving experience.

The sight of an adopter's face lighting up as when they come to pick up their new family addition, and seeing how happy the dogs are, it is as if they know that they're going to a new life.

It is truly humbling when the dogs put their heads out of the car window as they go to drive off, almost as if to say goodbye, I'm home now.

These are the moments that remind us of the positive impact of rescue, the resilience of the Doberman spirit and the boundless capacity of the human heart in those who adopt, to give and receive love.

Postscript from the Editor Going beyond

Although Ian and Tracy keep a low profile in terms of their efforts to help DRUE, those who know them, know they go above and beyond for the rescue dogs. They donate so much time to being with them, and helping in any way they can—cleaning kennels, walking, collecting supplies, transporting dogs, the list is endless. They also throw in a few of their own fund raising efforts too...

Personal fundraising efforts

In addition to doing all manner of duties in support of DRUE's team fundraising events (open days, dog shows and stalls at local events). Ian and Tracy have demonstrated remarkable personal commitment to fundraising efforts, particularly through initiatives that required personal sacrifices.



One of their endeavors involved abstaining from alcohol for an entire month—a challenging task for those who enjoy unwinding with a drink after a long day (I speak for myself here)!

In an even more courageous act, Tracy decided to shave off her beautiful hair as a sponsored 'Brave the Shave' to raise money.



This decision was not taken lightly, especially considering it was winter, a time when the comfort of one's hair is cherished even more! Yet, Tracy's determination to support DRUE, led her to this bold move.



The funds raised from their "Sober for a Month" challenge and Tracy's "Brave the Shave" campaign have provided invaluable support to the rescue Dobermanns, showing their dedication to the welfare of these animals.



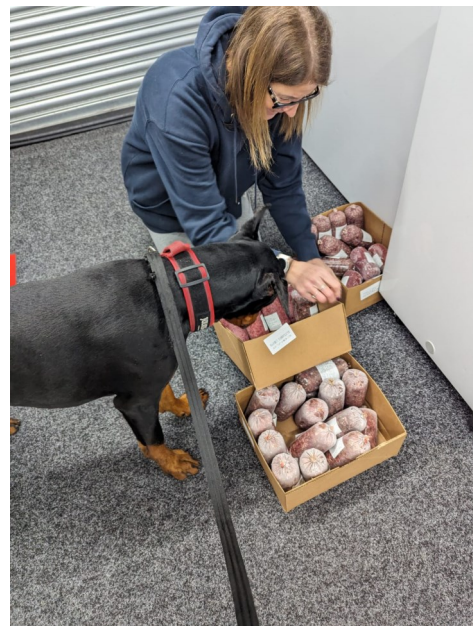
The photo above was taken in the North Lakes near Cockermouth with DRUE rescue Bobby. This was on Ian and Tracy's honeymoon — yes they spent it with a rescue who was waiting for his forever home. Now that's what I call commitment !!!

Doggie days out

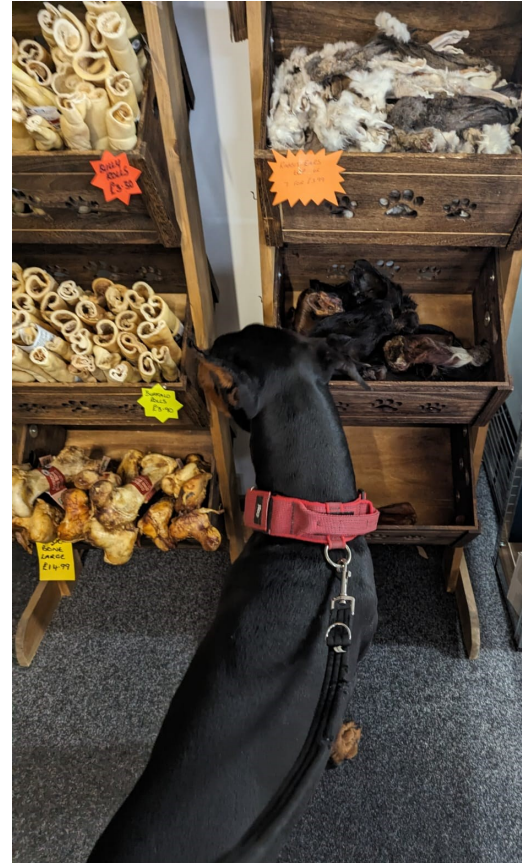
Here at DRUE, we are dedicated to providing the highest quality of life for our rescued Dobermanns while they stay with us, eagerly awaiting their forever homes. Our incredible team of pawsome volunteers devote countless hours to enriching these dogs' lives with stimulating activities. They expose them to the great outdoors for play opportunities and to everyday environments to help them acclimatise to their new lives when they leave us.

They've visited the countryside, reservoirs, hills and trails, the pub for lunch— numerous times (not sure what that tells us about our volunteers!), milkshake parlours and coffee shops, and they've been shopping regularly into Congleton town centre to sniff out their preferred treats from the doggy treat shop.

In the following pages, you'll find a collection of photographs capturing the dogs' recent adventures over the past few months. As our efforts continue, expect to see even more captivating stories and images in future editions of DRUE Life.



Doggie days out



Doggie days out





DRUE LIFE



The real BIG “£2 pledge”

Will you join us in taking the "donate for the Dobies" pledge on the first day of each month?

Dobermann Rescue UK & Europe, a dedicated charity, seeks your invaluable support. We are grateful for our devoted following, including those who already contribute regularly. Now, we reach out to all our supporters, urging you to pledge just £2 each month through direct debit (or more, if you can spare it). It's less than the cost of one cup of takeaway coffee per month, but every penny holds immense significance, shaping a remarkable impact.

We have nearly 9,000 DRUE Facebook group members and 20,000 Followers on our main page. If you all gave £2 a month, this would raise a huge amount. Imagine all the dogs we could help with that!

Being a charity we rely solely on volunteers for help and supporters to keep us running. By standing by us, you empower us to rescue, provide care, rehabilitate, and secure loving homes for these extraordinary Dobermann dogs. Your generous donations directly enhance their well-being. Together, let's make a lasting difference in the lives of Dobermanns.



Please join our 1st of the month £2 pledge

Donate for the Dobies

Every penny holds immense significance, shaping a remarkable impact.

By standing by us, you empower us to rescue, provide care, rehabilitate, and secure loving homes for these extraordinary Dobermann dogs.

Your generous donations directly enhance their well-being. Together, let's make a lasting difference in the lives of Dobermanns.

Please support us by setting up a direct debit on the 1st of the month for a £2 contribution, hopefully you won't miss it but the Dobies will benefit greatly.

Account: Dobermann Rescue UK & Europe
Account No. 61927168
Sort code 30-84-26

THE 3 DAYS. 3 WEEKS. 3 MONTHS RULE OF ADOPTING A RESCUE DOG

**THIS IS A GENERAL GUIDELINE, EVERY DOG IS UNIQUE
AND WILL ADJUST TO THEIR NEW ENVIRONMENT DIFFERENTLY**

IN THE FIRST 3 DAYS

Overwhelmed with their new surroundings. Not comfortable enough to be themselves. Reluctance to eat or drink. May shut down and curl up in their bed, crate or in a corner. May be stressed, scared and not know what is happening. May try to test you to see what they can get away with.

AFTER 3 WEEKS

Starting to settle in, feeling more comfortable, and realising this really may be their forever home. Figured out their environment and getting into the routine that you have set. May start showing their real personality. Behavioural issues may start showing, this is your time to put boundaries in place and show them what is right and wrong.

AFTER 3 MONTHS

Now completely comfortable in their home. You have built trust and a bond with your dog, which gives them a complete sense of security with you. They are set in their routine and will come to expect the routine to continue





DRUE LIFE



4 REASONS TO SUPPORT DRUE



We are 100% invested in the dogs wellbeing.

We aim to ensure the dogs are stimulated everyday with time out of their kennels to walk, run, play.



We have a highly motivated team made up of professionals and experienced Dobermann owners/handlers.

We aim to save and rehome as many Dobermann dogs in need as we can, but we need your help!



WAYS TO HELP US



One off donations, monthly standing orders, take part in our fundraisers

Gifts, treats, coats, PJs
robust toys for the dogs

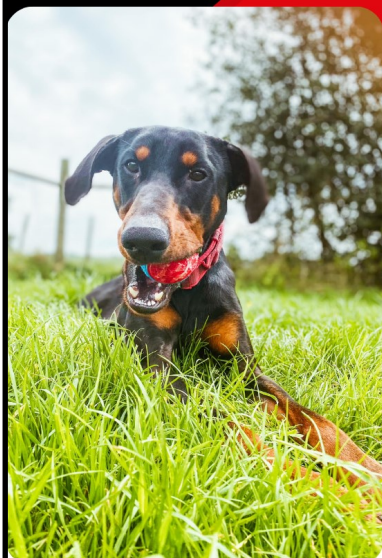


Bank details
Account name: Dobermann
Rescue UK & Europe
Sort code: 30-84-26
Account Number: 61927168

PayPal
druecharity@gmail.com
Please tick friends and family



Contact us & Follow us



EMAIL: info@dobermannrescueuk.co.uk
Web: www.dobermannrescueuk.co.uk
Tel: 01260 603017

FACEBOOK MAIN: facebook.com/DobermannRescueUK
FACEBOOK GROUP: facebook.com/groups/druecharity
FACEBOOK ADOPTERS: facebook.com/groups/DRUEadopters

Instagram@druecharity
Twitter@UkRescue