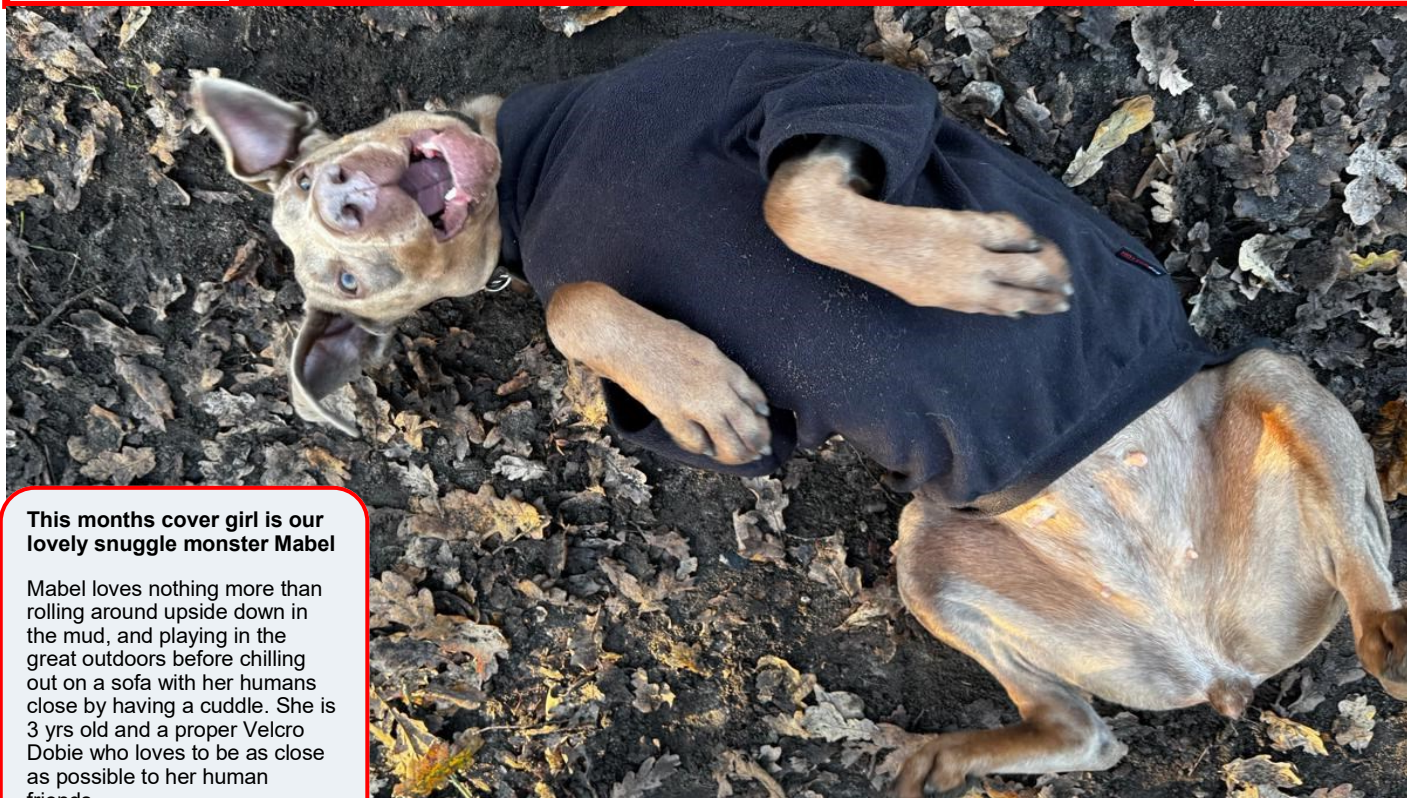




Dobermanmann Rescue UK and Europe (DRUE) Presents

# DRUE LIFE



## This month's cover girl is our lovely snuggle monster Mabel

Mabel loves nothing more than rolling around upside down in the mud, and playing in the great outdoors before chilling out on a sofa with her humans close by having a cuddle. She is 3 yrs old and a proper Velcro Dobie who loves to be as close as possible to her human friends.

December 2024

Issue 24

## Inside this issue:

Dogs Adopted	2
Dogs looking for	3
It's a dog's life – life after rescue	4
Spotlight on our volunteer	7
November fundraising	9
Launch of DRUE online shop	10
New kennel renovations	11
New kennels complete	12
Reminder: Cards & calendars	13
Reflection on 2024	14
3 days, 3 weeks, 3 months	16
DRUE info	17

## Welcome from the editor

Welcome to our festive newsletter, the last one of 2024! As we close out the year, we're excited to celebrate Issue 24, marking the end of the second year of our DRUE Life newsletter. Gosh how times flies and what a lot of good things we've been able to share with you about our dobie activities over these last two years.

This season, don't miss out on getting into the Christmas spirit with our exclusive DRUE calendars and Christmas cards, perfect for spreading cheer throughout the coming year.

Looking for those last minute gifts and wanting to do some good at the same time? Well, we've got some great ideas for you, check out our new online shop! Dive in to explore more products and offerings. For details, turn to page 10.

From all the team at DRUE, we wish you all a wonderful festive season and a prosperous New Year! Huge thanks from all of us for helping to save and then enrich these wonderful dogs lives. And now over to a special Dobie for his say...

Hi, I'm DRUE dog Morgan and I want to wish you a very happy Christmas, I'm one of the lucky ones who will be spending my Christmas in a loving home. Please read all about my new life in next month's issue (January) where I'm excited to feature in 'Life after rescue' and share my story with you.

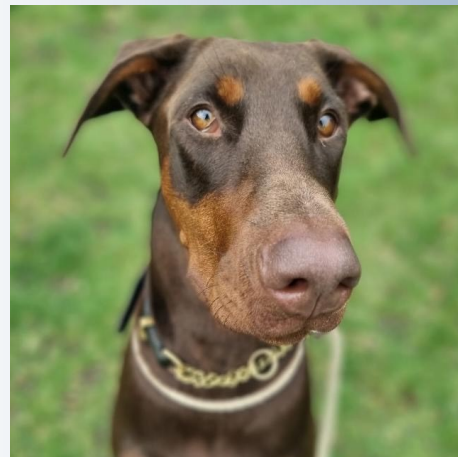




## Dogs who found their new forever home



**Bosco**



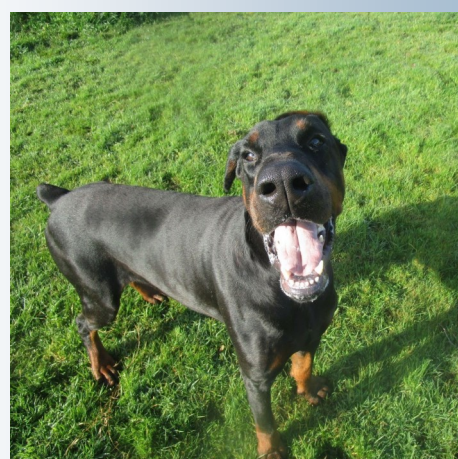
**Gracie**



**Derrick**



**Denzil**

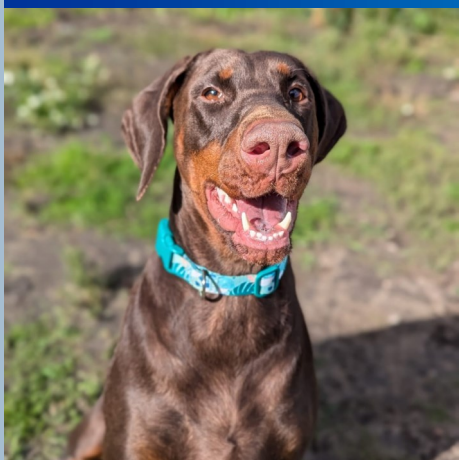


**Blade**

We have dogs still looking for their forever home, these are featured on the following page. If you are able to give any of our dogs a loving home please check out our current dogs and complete an application on our website at:  
[www.dobermanmannrescueuk.co.uk](http://www.dobermanmannrescueuk.co.uk)



**Please help me, I need a home !**



**Kiki (F)**



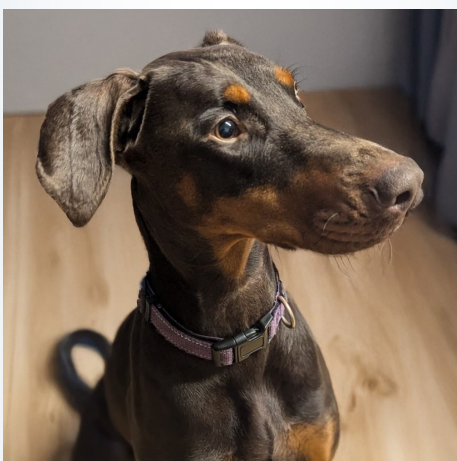
**Bella (F)**



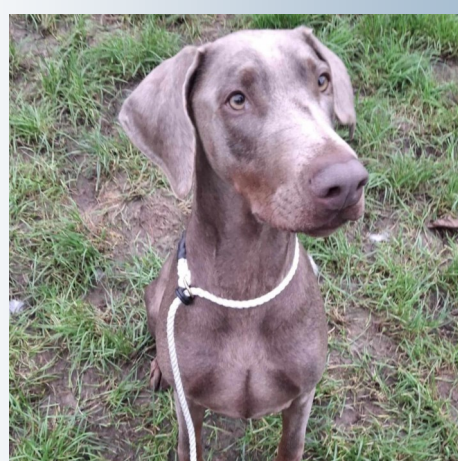
**Rupert (F)**



**Chase**



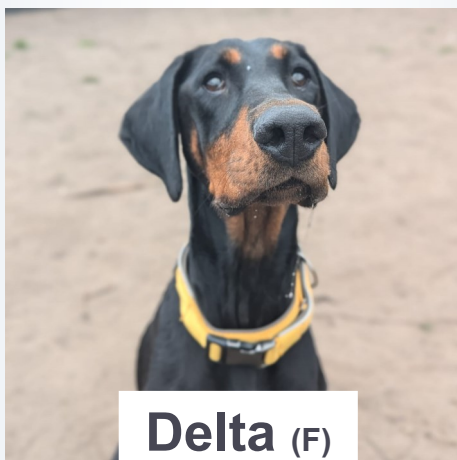
**Florence**



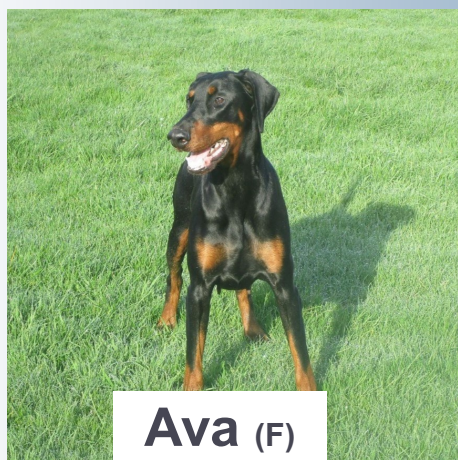
**Mabel**



**Roni (F)**



**Delta (F)**



**Ava (F)**

**Can you give one of our dogs a home?**

**Find out more about them and complete an application on**

**[www.dobermanmannrescueuk.co.uk](http://www.dobermanmannrescueuk.co.uk)**



## Life after rescue — “Sage”

### Jade's journey: running with her rescue

Meet Jade, an intrepid canicross runner whose passion for the outdoors and high-energy lifestyle led her to adopt Sage, a little pocket rocket of a dog with an equal zest for adventure. Together, they form an unstoppable duo, traversing trails, mountains, and forests. This article delves into Jade and Sage's unique partnership, exploring how their companionship has transformed their lives, pushing boundaries, and redefining what it means to run together. Lets hear it from Jade.

### Finding DRUE

I came to hear of DRUE through a mutual friend on FB sharing one of their posts on a lovely looking Dobermann cross, so I decided to start following and see how DRUE interacts with their posts, dogs and followers.

Knowing what I wanted in a dog and the life I wanted to give it, I reached out to DRUE explaining myself, my hobbies, the personalities of my current two dogs at the time and whether they felt they had a dog that would suit this lifestyle.

A request I asked for was a Dobermann crossed with any pointer type breed, as pointers and crosses excel in canicross, and this was specifically what I wanted this new dog of mine to shine in. Within no time Liz replied back pretty much saying “We have the perfect dog for you.”



*The first photo I saw of her*

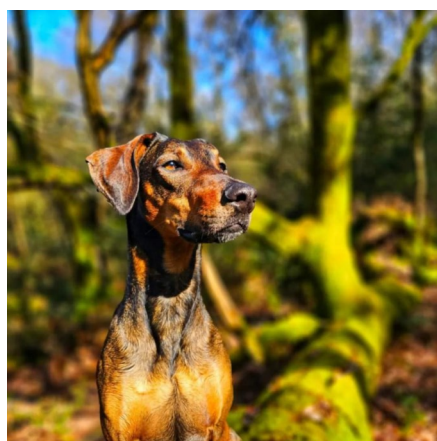
Within less than a week I made the journey up to go and meet this dog they had picked out for me... and the rest is history.

I'd say Sage settled in pretty quickly. She's very much a curious, adventures, friendly dog and so took everything in her stride. She certainly made my bed her bed from day one!



She got on very well with my two current dogs at the time, she was incredibly respectful to my senior GSD and she absolutely loved having my little Mongrel as her back up buddy on all things being naughty. At home she was perfect, although if I put my running gear on and leave without her, then she does get FOMO (fear of missing out)!

My 'issue' if I can even call it that, was her recall. Now I'm not saying she was terrible for coming back in general, but I had to work very hard on her recall when her nose or eyes would catch any sort of wildlife to chase.



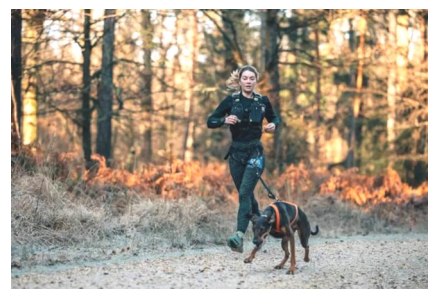
She has quite a strong chase drive, though it's calmed down from when she first joined us. It was a trait I hadn't experienced previously in a dog of mine and therefore I reached out in the early days of having Sage, in Gundog training and Man-Trailing, both these gave me the experience on how I could personally handle this strong trait of hers.



But more importantly, after our first week together I tested her out on a 5km canicross run and my God did my hips, thighs and legs ache after running with her !!



The power she has was more than I'd experienced before and it took months for my body to get use to running with her. She was a pulling machine from day one and at only 20kg she's called The Pocket Rocket for a reason!





## Life after rescue “Sage”

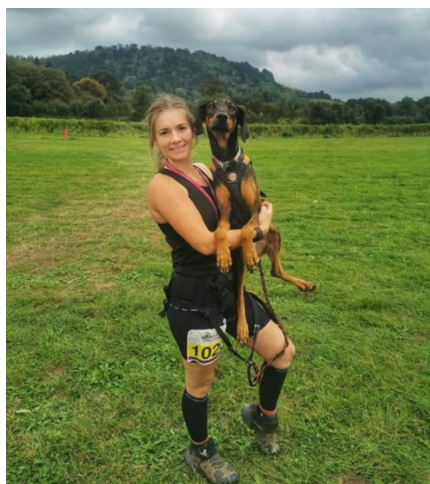


### Our adventures together

Over the years together we have had so many adventures, ranging from hiking around England, Wales, Lake District, Scotland to camping trips and wild camping, SUPing on the sea in Cornwall, Devon and across the south coast and canals. We've attend country shows and canine sport shows in which we've showcased our sport.



But most importantly we have canicrossed on so many trails and I couldn't even tell you how many miles she has under her paws now.



We've had great fun racing all around England and Wales. She's given me PBs, and we've been placed at numerous events.

She's a dog with a strong working mode, she certainly wouldn't suit a life simply at home all the time and doing the same walk from the house daily, she requires being worked and she absolutely loves her canicross and adventures.

The excitement when she clocks on when we are at a race is unbelievable!



She knows the difference between myself getting up and changed for work and getting up and changed for a run. She's smart and sometimes too smart.

### The cheeky side

In the first year I had her, I had WiFi cameras in the house (to keep an eye on her). During my lunch break at work, I logged on to see what Sage was up to, only to see her dragging around a bag of flour across the kitchen floor, through the corridor and onto her dog bed.

No matter how much I tried to get her to stop through the voice on the camera, she completely ignored it and continued her destruction.

Upon getting home I found the flour had turned almost like concrete all over the floor, in her dog bed and up her nose ! Something I look back at now and laugh about.





## Life after rescue — “Sage”



### Best memories & adventures

It's very difficult to define my best memory or adventure with her so far, as we've done so much together and I have so many.

For canicross, my best are when she's at her best and we excel together as a team.

For SUPing, my favourite memory would be when she finally learnt to get on the board herself when I asked her to.



For hikes, my favourite memories are when we get to the top of hills and see the views.

For dog walks, it's a collection of her getting excited playing with her favourite dog buddies. There's too many to pick from.



But my morning snuggles with her in bed are certainly firm favourites of mine, especially in the winter when she's even more cuddly.



## Quick fire interview — Sage — 6 years old

**Q. How long has she been in your life?** A. Sage was just over 1 (naughty teenage years) when she first joined me and we've been a team now for 5 years.

**Q. Favourite food?** A. She is actually fussy! But the first few years she was absolutely terrible for stealing butter off the kitchen side! If offered to her, she'll eat it in a heartbeat. But otherwise she does love a good peanut butter tub!

**Q. If she was a famous person who would she be likened to & why?** A. With those long legs and striking looks she'll be a supermodel for sure if she was human.

**Q. What makes you laugh about her?** A. She can be incredibly random sometimes with short funny outbursts. Once we were waiting at a canicross meet up to set off and run, I could feel the line pulling behind me and so I turned to look and see what Sage was up to, only to see her rolling around on a tarmac floor, specifically rolling on a dried up dead worm! I'm not sure I even know what logic she was thinking that day!

**Q. Does she have a naughty side?** A. Sage has many naughty sides! But those sides also make me laugh. She used to be cheeky nabbing food from the side, she makes a den with my bed while I'm at work, she moans when she's cold/bored/needs the toilet, but even more so she talks back at you! Just like a naughty teenager. .



## Spotlight on our volunteer “Sophie”

### A volunteer's story with DRUE

This month we chat with one of our team members ‘Sophie’. She is an experienced handler who has made dogs her profession and her life. This is her story...

### Life with dogs and a passion for Dobermanns

Growing up surrounded by the love and energy of dogs, my journey with animals began early. At age six, I started volunteering with the RSPCA alongside my grandmother. We spent hours organising coffee mornings and fundraising stalls to support the animals, and by age eleven, I was spending my time in the kennels and fostering dogs in need.

At thirteen, I got my first dog, a pug named Lola, and over my younger years, my family welcomed a Staffordshire Bull Terrier, another rescue pug, and numerous fosters.



Today, I live with my partner and share my home with five wonderful dogs: Kaiba, a German Shorthaired Pointer; Sage, a German Shepherd; Lemon, a mini Poodle; Bowser, a Weimaraner; and Petrin, a Cocker Spaniel.



Though I work with all breeds through grooming, training and dog walking, my admiration for Dobermanns has only grown, and I know my next companion will be one of these incredible dogs.



### Finding DRUE and taking a step forward

I first learned about DRUE (Dobermanmann Rescue UK & Europe) in an unexpected way. I run an Instagram account dedicated to my dogs, and through that, I spotted a post about DRUE seeking volunteers.

A fellow dog lover from Plymouth noticed the post and reached out knowing I was in the Cheshire area, letting me know about the need for volunteers nearby. Although the position had already been filled, I contacted Danielle, eager to get involved. I hadn't volunteered in a rescue setting since my grandmother's passing, but the opportunity to work with Dobermanns just felt right.

### A day at DRUE: bringing joy, comfort, and companionship

When I volunteer at DRUE, I like to start the day with quality time for each dog in the kennels. I bring treats and a chew for everyone and spend a few minutes with each pup. Then, I'll choose a dog who's particularly in need of a good, long walk and take them on one of my favourite routes, often to a local secure area with acres and acres of fields, woodlands, and ponds. It's a beautiful spot where the dogs can run freely and enjoy the outdoors.

Some evenings, I help with bedtime shifts. I spend time in the paddock, making sure each dog has the chance to play and settle down for the night.

As the colder months have set in, I put them in their pyjamas, turn on heat lamps, and ensure they're warm, happy, and ready for rest. After dinner, I secure each dog in their kennel for bedtime, knowing they're comfortable and safe.

### The challenges and rewards of rescue

Working with rescue dogs, especially Dobermanns, can be challenging and rewarding in equal measure. Each dog has its unique personality and needs. For instance, I've spent a lot of time with Rupert, a big-hearted yet high-energy pup who needed some structure. He's a 40kg bundle of joy and enthusiasm, and while his



## Spotlight on our volunteer “Sophie” cont.

initial behaviour required a lot of training, it's been deeply rewarding to watch him blossom with structure and care. It's hard not to feel emotional, especially with long-term dogs like Rupert; I know they could bring such happiness to someone willing to give them a chance.

### Building trust with Dobermanns

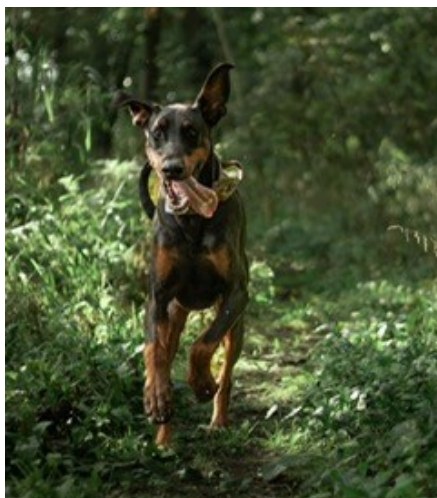
I approach each Dobermann with patience and understanding, especially those that may be shy, fearful, or reactive.



As a qualified dog trainer and groomer working towards a degree in canine psychology and behaviour, I rely on techniques that build trust slowly and positively. With a pocketful of high-value treats, I create a gentle, non-threatening introduction, tossing treats nearby to help establish positive associations without creating conflict. Over time, we build trust through training, mental games, and activities that bring them joy. It's a careful balance of patience, respect, and kindness.

### A memorable moment

One particularly memorable moment involved a Dobermann named Rocco.



I took him to a secure woodland for some outdoor fun and brought my camera along. Rocco's joy in the woods was palpable, and he seemed to be a natural model, posing perfectly every time I lifted the camera. Capturing those moments of pure happiness on film was a reminder of why I do this work.

### The power of rescue

At DRUE, we do more than just find homes for Dobermanns; we help them transition, learn, and grow. For dogs like Rupert, even a few training sessions can make a difference in their future and enhance their chances of being adopted. Every moment spent outside of the kennels, engaging their minds and encouraging positive behaviours, helps prepare these dogs for their next chapter.

### Advice for future volunteers

For anyone considering volunteering as a dog walker or working with rescue Dobermanns, understanding the breed is essential. Dobermanns are highly intelligent, loyal, and active—far from a breed content with short strolls and minimal stimulation. Be prepared for challenges, and take the time to get to know each dog individually. You'll quickly see they each have unique personalities, and forming bonds with them is a privilege like no other.

### Advocating for Dobermanns and ethical rescue

I wish more people understood the patience and commitment needed to welcome a Dobermann, especially a rescue, into their home. Many of these dogs have been given up for a reason, and they'll need time and structure to adjust and thrive. I also encourage everyone to research before adopting, as Dobermanns need mental enrichment, proper socialisation, and consistent training to be happy and healthy.

This work has also reinforced my commitment to ethical breeding. I believe good breeders should always be willing to take back any dog they produce, ensuring the well-being of each puppy throughout its life. Unfortunately, Dobermanns have become a popular trend, leading to irresponsible breeding and many ending up in rescues like DRUE. Watching DRUE's volunteers work tirelessly to care for and rehabilitate these dogs is a reminder of how important responsible breeding and thoughtful rehoming are to animal welfare.

To conclude, volunteering with DRUE has been a journey of growth, joy, and connection. Every day spent with these dogs is a reminder of their resilience, loyalty, and the transformative power of love and patience. It's an honour to work with these remarkable dogs and to be part of an organisation that genuinely cares for every Dobermann in its care.





## Volunteer efforts boost fundraising for DRUE in November

This November, DRUE has seen an unprecedented surge in community support and volunteer engagement, leading to fabulous fundraising activities. Here's a look at some of the key efforts:

### Christmas hamper raffle

Our team have got together in aid of DRUE to provide some wonderful hamper items and launched some exciting Christmas hamper raffles. This has drawn considerable attention from the local community, with tickets selling briskly. This initiative not only promises a super prize for the winners but also serves to spread awareness of our rescue while raising crucial funds.



### The Space Invader pub

One of our super local pubs in Goostrey, has become a cherished ally to DRUE. Known for its warm and welcoming atmosphere, the pub not only allows our dogs inside but has embraced DRUE's cause with enthusiasm. The Space Invader is a key player in local efforts to



support Dobermann rescue, providing both a venue to help with fundraising and a friendly environment where both dogs and our team of handlers feel at home.

### The Pest's Christmas cakes

One of the highlights this month has been the baking prowess of a beloved



volunteer, affectionately nicknamed "The Pest." Her beautifully crafted Christmas cakes have been a hit among

supporters and are raising funds whilst adding a sweet touch to the spirit of giving.

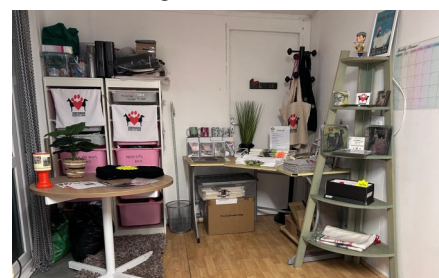
### Dog show and indoor market

A team of DRUE volunteers attended a dog show and market at Biddulph Town Hall, where they set up an engaging stall. They offered a range of DRUE merchandise and other canine related gifts. This event not only helped in fundraising but also in spreading awareness about DRUE's work, connecting with potential adopters, and sharing stories of the dogs they've helped.



### Kennel open day

Kennel Coordinator Danielle, organised an open day at the DRUE kennels. This event was a celebration of our local community support, with the DRUE shop fully operational for the day, selling merchandise and other canine goodies.



There were refreshments and lots of cakes available, we even had our own DRUE cupcakes, thanks to our team member 'Charlotte'!



The highlight was the touching visits of some of our previously adopted Dobermanns. These reunions not only made our team immensely happy but also demonstrated the lasting impact of DRUE's work.

The open day also served as a platform for potential adopters to meet the dogs, understand more about the care they receive, and witness firsthand the dedication of the volunteers. We were delighted that 2 adoptions took place on the day too, making it an extra special event.

### Impact and appreciation

These efforts underscore the commitment of DRUE's volunteers, who work tirelessly behind the scenes, organising events, promoting awareness, and ensuring that every penny raised benefits the dogs in their care. The response has been overwhelmingly positive, not just in terms of financial support but also in participation and spreading the word. We also need to give a special thank you to the DRUE team who covered the kennel duties whilst the others were out having fun.

The work done by DRUE this November stands as a testament to what can be achieved when people come together for a cause.

For more information on how to participate in our ongoing efforts or to learn more about adopting, get in touch via our email [info@dobermannrescueuk.co.uk](mailto:info@dobermannrescueuk.co.uk)

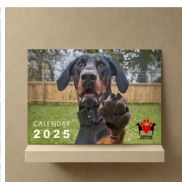




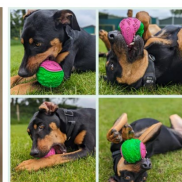
## Celebrating the launch of our new DRUE online shop



Christmas Dinner for a rescue Dobie  
£5.00 GBP



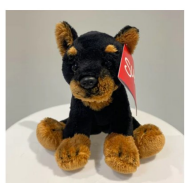
DRUE 2025 Dobermann Calendar  
£10.00 GBP



Christmas Toy for a rescue Dobie  
£5.00 GBP



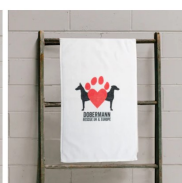
Christmas cards  
£7.00 GBP



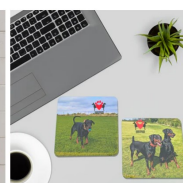
Dobermann Soft Toy  
£7.95 GBP



Dobie Picture Tea Towel  
£4.00 GBP



DRUE Logo Tea Towel  
£4.50 GBP



DRUE Dobie Coasters (4-pack)  
£10.00 GBP



DRUE Christmas Mug  
£7.00 GBP



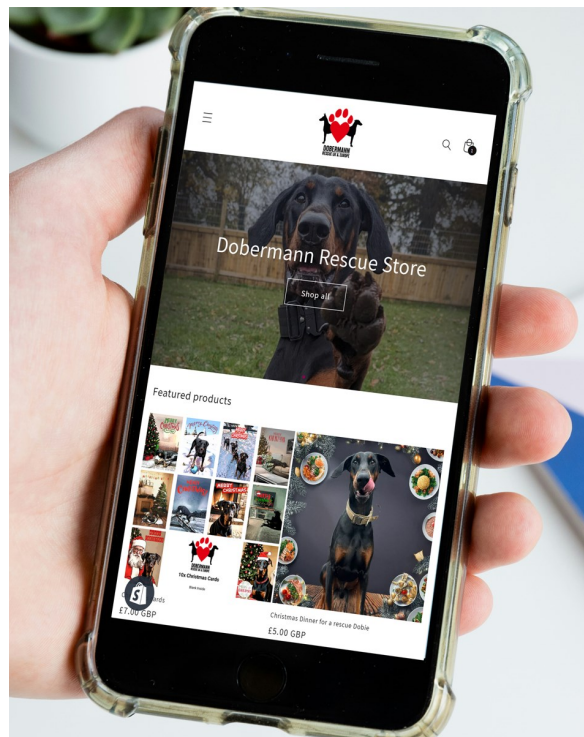
Drue logo mug  
£7.00 GBP



Christmas mug "baby its cold outside"  
£7.00 GBP



Christmas stocking mug  
£7.00 GBP



### The launch

In a fusion of e-commerce and animal welfare, DRUE are excited to announced the launch of our new online store. This retail venture is not just about shopping; it's a mission to support one of the most dedicated rescue operations for Dobermanns.

We open our digital doors with a unique value proposition: every purchase supports the rehabilitation and rehoming of rescued Dobermanns.

### Quality merchandise

From stylish Dobermann themed merchandise, to practical items, all products are chosen to resonate with Dobermann enthusiasts and pet owners alike.

### Full profit donation

The cornerstone of our online shop's business model is that 100% of the profits go directly to DRUE. This means that every purchase directly contributes to:

- ◆ Care: Covering medical expenses, vaccinations, and treatments for rescued Dobermanns.
- ◆ Kenneling: Providing safe, comfortable temporary homes for dogs awaiting adoption.
- ◆ Food: Ensuring all dogs have access to nutritious meals.
- ◆ Rehoming: Facilitating the process of finding forever homes for these loyal companions.

### Why use our online shop?

Support a cause: You're not just buying products; you're contributing to a cause. Your purchase aids in giving a second chance to dogs that need it most.

Exclusive Items: Look out for limited edition items and special collaborations that not only make for unique purchases but also help in

raising awareness and funds for our rescue efforts. The stock will continuously change and new items added frequently, in particular with seasonal themes. So keep a regular watch to capture any new items.

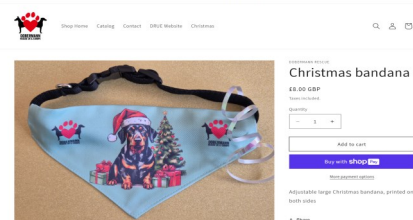
### How to get involved

Visit the Store: You will find the link on our website at:  
[www.dobermannrescueuk.co.uk](http://www.dobermannrescueuk.co.uk)

Spread the Word: Tell friends and family about the store, and encourage them to shop for a cause.

### Conclusion

By choosing to shop here, you're not just acquiring goods; you're participating in a life-saving mission.





## New kennel site renovation In progress....



Led by our intrepid team leader who tried to remain anonymous by adopting a blue bin (later found out to be none other than the amazing Ian Tyson), work commenced changing a former cow barn into a wonderful home for our rescued Dobies.



They set to work pulling off old plaster, power-washing walls and floors, sorting the lights, installing windows, doors and kennel structures.

Weeding took place and the borders tidied in the walkway near the office.



Then there was a store room to sort and the food storage area with our fridges and freezers.



Ian gathered a gang of our super DRUE volunteers plus a few of his good 'mates'.



Meanwhile across the way work was also going on in our new office. There was scrubbing, painting inside, painting out outside and lighting to sort out.

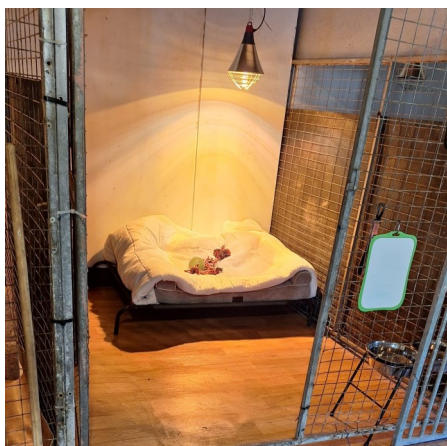


Finally the last bit of key infrastructure was the secure paddock. High fencing and a sturdy gate were installed to make sure our pups can run off their energy in a super safe environment.

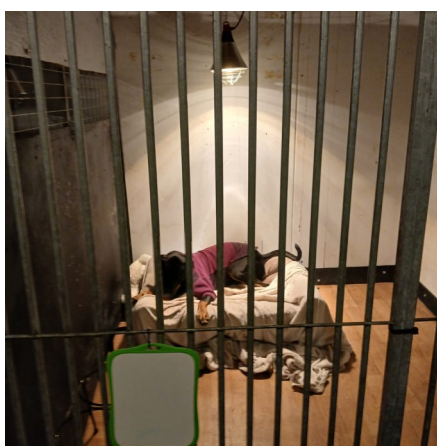




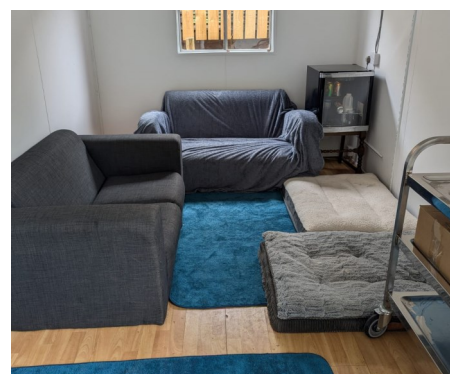
## New kennels Enjoying the fruits of our labour



And so our dog kennels took shape, they were painted, insulated, heat lamps installed and some very cosy beds with lots of bedding on top for our pups to relax and have a comfortable night's sleep after their many daily adventures.



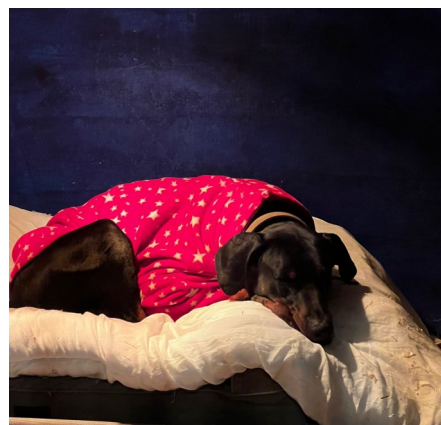
I think it's safe to say we have some extremely cosy Dobies.



The dogs love spending time with us in the office and sofa cuddles are one of the many little luxuries they enjoy at DRUE.



They all have toys as well to snuggle down with.

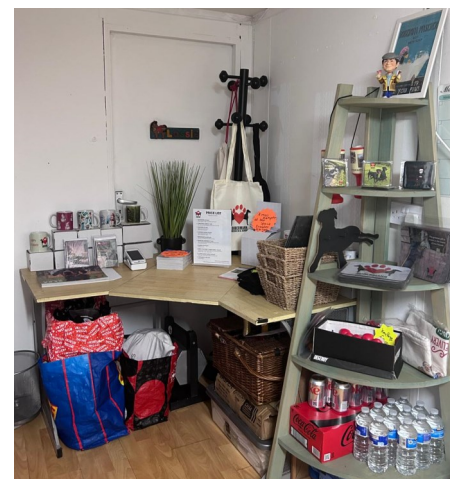
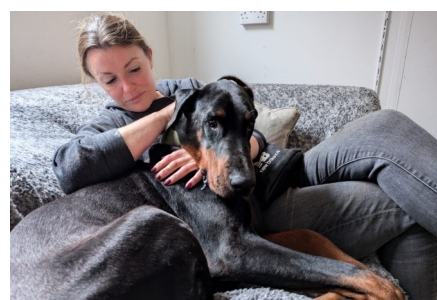
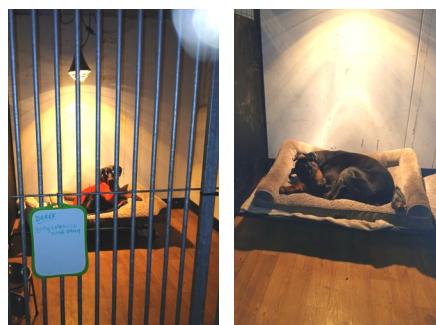


Then we finished the office. The painting and lighting was finalised then some rugs and sofas arrived.

Next was the fridge, microwave and coffee making equipment. Hanging baskets went up outside during the summer and we even ended up with a potted plant inside just to finish off the very homely feel.



To finish off the set up, we also created a shop corner where people can buy our DRUE merchandise.



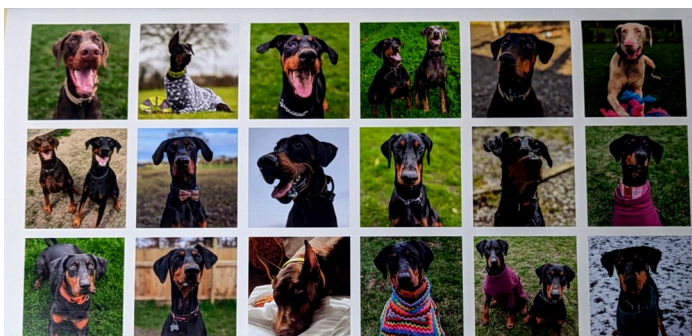




# DRUE LIFE



## Last minute reminder... Get your Xmas cards & calendars now



[www.dobermanrescueuk.co.uk](http://www.dobermanrescueuk.co.uk)

### Where to buy

The DRUE 2025 calendars and Christmas cards are available for purchase by emailing: [info@dobermanrescueuk.co.uk](mailto:info@dobermanrescueuk.co.uk)  
Payment can be by PayPal (please tick friends and family) or by BACS.

On behalf of our Dobies, thank you and we wish you a very happy Christmas.

PayPal  
[druecharity@gmail.com](mailto:druecharity@gmail.com)  
Please tick friends and family

Bank details  
Account name: Doberman  
Rescue UK & Europe  
Sort code: 30-84-26  
Account Number: 61927168

If you missed the article in our last DRUE newsletter or forgot to contact us to order your 2025 Calendars and Christmas cards then here's your reminder.

The calendars will not only look great adorning your wall but they make super gifts for family and friends and in purchasing them you are helping to support our Dobies.

All the pages feature our own DRUE rescue dogs. Who knows, you might just recognise some from our social media, supported them with your donations, or perhaps you have adopted one.

The calendars are priced at £13 including postage and packing.

Each pack of our Christmas cards contains a set of ten exclusive cards based on our very own rescue dobies for just £7, which includes postage and packaging. It's a small price for a gift that gives back.





## Reflecting on a remarkable year at DRUE

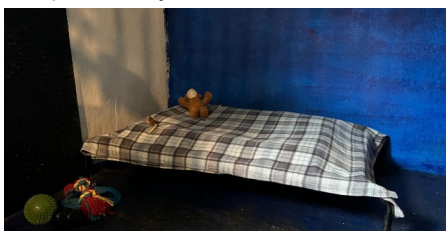


### An amazing 2024

This year has been nothing short of transformative for us at DRUE and we're excited to share some highlights of what we've achieved together:

### A new home for our Dobies

We relocated to a very friendly working farm in Goostrey, where we've revitalised an old barn into a loving sanctuary for our dogs. When we took it over, it was full of cobwebs and in the distant past had been frequented by cows.



Thanks to our DIY hero Ian, and our dedicated team of kennel creators, the barn was transformed into a clean, warm, safe haven which is super cosy for our dogs, they even have classic music playing to create a relaxing ambiance.

Meanwhile in our new office, the other half of the team got to work, scrubbing, painting, kitting it out with the essential T&C making equipment, fridge, microwave and the best thing is a huge sofa for the dogs to chill out alongside our team when they come in to relax after a long walk.

### Adventures beyond the kennel

Our Dobies enjoyed numerous outings this year, from splashing in local rivers to exploring the big agility field and stretching their legs playing in our own secure paddock. They've been



taken out for hillside expeditions, had long walks around reservoirs, even to a Christmas event at Chatsworth House. They've visited supporters' and friends homes, local pubs, and participated in fun pet shop visits.



### Community and support

We've been there for many owners, providing one-on-one support.

Our big DRUE Open Day and Fun Dog Show in Congleton was a monumental success, and we've kept the fundraising spirit alive throughout the year, by attending various events with our DRUE fundraising stalls.



These include; Goostrey Rose Day, LDR event in Bury, Lincs Doberfest, Hayley's Halloween dog show, Biddulph Town Hall Canine event, another open day at our kennels and much more.

### Operational enhancements

Our new accounting system is fully functioning and has not only streamlined our financials but also provided us with invaluable data to better serve our mission.

### Team expansion

Our incredible Kennel team has expanded and we have put in place a digital rostering system allowing all team members to access, this enables us to see who is available for the dogs outings and where we can add more helpers. This ensures our dogs get out more than ever, living their best lives.



Several team members will soon complete a first aid course, adding to our current team of first aiders and enhancing our care capabilities.

Our new fundraising team has grown and become very active, they are working hard and making headway in moving DRUE forward.





## Reflecting on a remarkable year at DRUE



### Support has grown

We're thrilled to see more supporters joining our cause. Our supporters donate financially, and also donate equipment for our dogs and kennels. Supporters have done numerous fund raisers for DRUE – including but not limited to raffles, sporting events and birthday donations.



Treats from our friends with a doggie treat business. Headcollars to help us with our strong Dobies. Beautiful dog coats and jackets. Plus bedding, dog beds and a whole host of other much needed items.



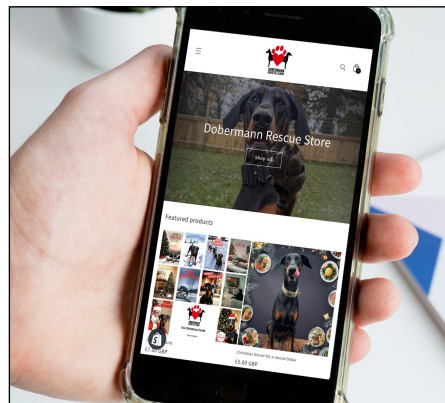
We have also established great relationships with suppliers who are giving us great support with products too.

Our Amazon wishlist has brought in many items needed for our pups from our very generous supporters. There are links to it on our website and also pinned at the top of our Facebook pages.



### In-house merchandise

We now have the ability to print our very own in-house merchandise. To compliment this and raise more funds for our dogs in need, we've launched our online shop, featuring DRUE-themed merchandise. We are adding Christmas gifts in the run up to the festive season.



When you buy from our shop you are not just getting a lovely gift but you are helping a Dobie in need at the same time. What could be better. You can find our online shop via the link on our Website.

### Celebrating milestones

Our DRUE Life newsletter marked its second anniversary with this, the 24th issue in (December 24), seeing a surge in subscribers over the two years since it's inception.

### Looking Forward

As we approach the end of 2024, we reflect on a great year filled with growth, achievements, and the joy of seeing our Dobermanmanns thrive in their new homes. We're excited for what's to come in 2025 as we continue to move from strength to strength.

### Thank you

We would like to say a big thank you to all of you who have supported us in so many ways; financially, with food, equipment, walking the dogs and assisting at the kennels and of course most importantly to our super adopters who have opened their homes and hearts to take in a Dobie in need. Thank you for being part of our journey. Here's to more paws, more love, and more rescues in the year ahead!





## THE 3 DAYS. 3 WEEKS. 3 MONTHS RULE OF ADOPTING A RESCUE DOG

**THIS IS A GENERAL GUIDELINE, EVERY DOG IS UNIQUE  
AND WILL ADJUST TO THEIR NEW ENVIRONMENT DIFFERENTLY**

### IN THE FIRST 3 DAYS

Overwhelmed with their new surroundings. Not comfortable enough to be themselves. Reluctance to eat or drink. May shut down and curl up in their bed, crate or in a corner. May be stressed, scared and not know what is happening. May try to test you to see what they can get away with.

### AFTER 3 WEEKS

Starting to settle in, feeling more comfortable, and realising this really may be their forever home. Figured out their environment and getting into the routine that you have set. May start showing their real personality. Behavioural issues may start showing, this is your time to put boundaries in place and show them what is right and wrong.

### AFTER 3 MONTHS

Now completely comfortable in their home. You have built trust and a bond with your dog, which gives them a complete sense of security with you. They are set in their routine and will come to expect the routine to continue







# DRUE LIFE



## 4 REASONS TO SUPPORT DRUE



We are 100% invested in the dogs wellbeing.

We aim to ensure the dogs are stimulated everyday with time out of their kennels to walk, run, play.



We have a highly motivated team made up of professionals and experienced Doberman owners/handlers.

We aim to save and rehome as many Doberman dogs in need as we can, but we need your help!



## WAYS TO HELP US



One off donations, monthly standing orders, take part in our fundraisers

Gifts, treats, coats, PJs  
robust toys for the dogs



Bank details  
Account name: Doberman  
Rescue UK & Europe  
Sort code: 30-84-26  
Account Number: 61927168

PayPal  
druecharity@gmail.com  
Please tick friends and family



## Contact us & Follow us



EMAIL: [info@dobermannrescueuk.co.uk](mailto:info@dobermannrescueuk.co.uk)  
Web: [www.dobermannrescueuk.co.uk](http://www.dobermannrescueuk.co.uk)  
Tel: 07511 869881

FACEBOOK MAIN: [facebook.com/DobermanRescueUK](https://facebook.com/DobermanRescueUK)  
FACEBOOK GROUP: [facebook.com/groups/druecharity](https://facebook.com/groups/druecharity)  
FACEBOOK ADOPTERS: [facebook.com/groups/DRUEadopters](https://facebook.com/groups/DRUEadopters)

Instagram@druecharity  
Twitter@UkRescue