

# DRUE LIFE

## Valentines Day Special

14 reasons why  
we love the  
Dobermann!

## INSIDE THIS ISSUE:

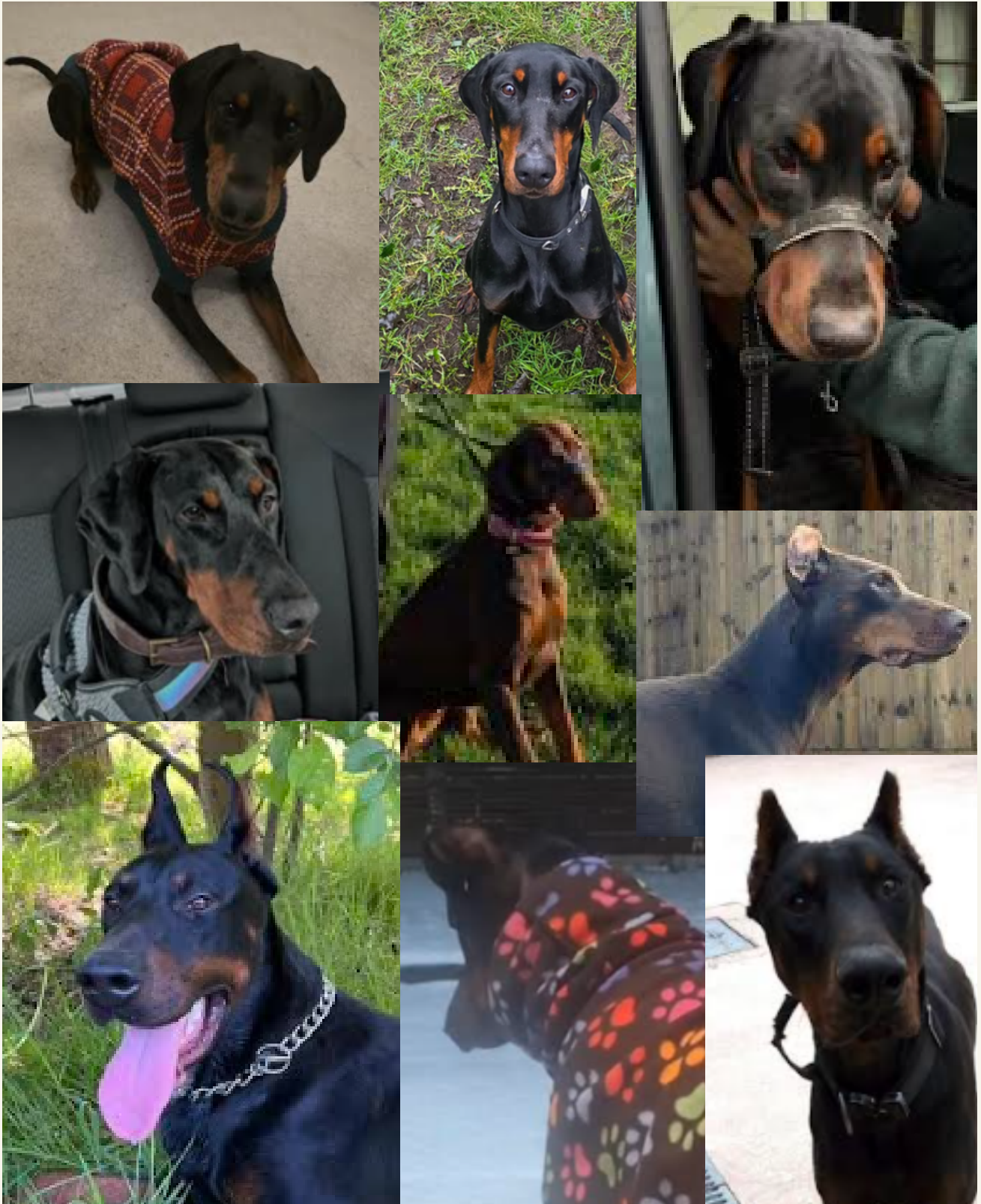
- 🐾 DRUE Dogs Rehomed and Still Waiting
- 🐾 Donations and vet bills
- 🐾 14 Reasons Why We Love The Dobermann
- 🐾 Foster Plea
- 🐾 Nick Heyes from Fury & Nick
- 🐾 Dobermann Wordsearch
- 🐾 The New 'DRUE 30-Day Challenge'
- 🐾 Our Work Beyond The Dobies

Welcome  
to our new  
ambassador duo  
**Nick Heyes  
and Fury**





# FOREVER HOMES FOUND



Congratulations to **Dizzy**, **Duke**, **Greta**, **Kyla**, **Max**, **Nova**, **Roxy**, **Theo**, and **Winnie** for finding your forever homes in January, and a huge thank you to everybody who came forward to help them. Have a wonderful time together.

# FOREVER HOME NEEDED

Chief is a handsome two-year-old boy who is seeking a new home through no fault of his own. Due to a change in circumstances, he is now looking for a family who can provide the structure and guidance he needs to truly thrive.

**Personality & Training:** In his previous home, he didn't receive much formal training or clear boundaries, which means he currently follows his own impulses. He is very fond of human interaction and can be quite demanding of attention, as he is used to acting as he pleases.

**Life with Other Pets & Children:** Chief has experience living in a busy home with a small dog, a cat, and small children.

It is important to note:

**Pets:** He is not aggressive, but his play style is very exuberant. He tends to chase cats and can be too rough for smaller dogs.

His behaviour is playful banter rather than mischief, but he needs a home that can manage his energy.

**Children:** While he is friendly, he has occasionally knocked small children over simply because he isn't aware of his own size and strength.

**On The Walk:** Chief is a star when it comes to temperament on the move; he is not reactive to other animals or people. He does, however, have a tendency to pull on the lead. This is something to be addressed with consistent training in his new home.

**The Ideal Match:** Chief requires an experienced owner who is willing to invest time in establishing a solid routine and clear boundaries. He is a bright, high-potential dog who simply hasn't had the "rules of the house" explained to him yet. With the right guidance and consistency, Chief will flourish into a well-balanced and loyal companion.

**CHIEF**



# Ever Wondered Where Your Donations Go?

Every donation we receive goes directly toward giving our rescue dogs the care, safety, and second chances they deserve. A significant portion of funds is used for often substantial veterinary bills, including emergency treatment, ongoing recovery, medication, and specialist care when needed. Many of the dogs that come into our care have complex medical needs, and your support ensures they receive the best possible treatment without compromise.

Donations also help cover the daily costs of caring for our dogs while they are with us. This includes kennel fees, nutritious food, toys for enrichment, comfortable bedding, warm coats, and the essential running costs such as electricity and heating. These may seem like small things, but together they create a safe, warm, and comforting environment where dogs can begin to heal both physically and emotionally.

Beyond basic care, your generosity allows us to invest in each dog's future. Funds help provide access to private secure fields where dogs can experience freedom, often for the first time, without fear or pressure. We also put donations toward training, confidence-building, and careful preparation for life in a new home, giving each dog the best chance of a successful, lasting adoption.

If you'd like to support us in other ways, you can also purchase our charity merchandise. We offer items such as mugs, coasters, greeting cards, and even a rosette challenge you can take part in. Whether you donate directly or support us through our products, every contribution plays a vital role in changing a rescue dog's life for the better.

Whether you donate, purchase our merchandise, share our posts, or simply cheer us on, your kindness truly makes a difference. We could not continue our work without the compassion and generosity of our supporters. If you haven't donated yet but would like to consider doing so, or if you'd like to learn more about how you can help, please don't hesitate to get in touch with us. Every bit of support, no matter how small, helps us give rescue dogs the brighter future they deserve.





# The Reality of Rescue:

## Veterinary Care & Second Chances



Veterinary bills are one of the biggest and most challenging pressures faced by any dog rescue charity, and for us they are an unavoidable part of saving lives. Every dog that comes into our care deserves prompt, thorough, and compassionate medical treatment, regardless of their background or condition. Unlike privately owned dogs, many rescue dogs arrive with little to no medical history, meaning we must start from the beginning to assess their health and address both obvious and hidden issues. These costs add up quickly and place a constant strain on our limited resources.

The reality is that many dogs come into rescue already unwell, injured, or neglected. We regularly see dogs needing emergency treatment, extensive diagnostics, blood tests, X-rays, scans, and specialist referrals before they are even stable, let alone ready to move on to a foster or adoptive home. Some arrive with untreated infections, chronic skin conditions, dental disease, lameness, or injuries that have clearly gone without care for far too long. Others require urgent surgery or long-term medication simply to relieve pain and restore quality of life. These are not optional treatments — they are essential.

Beyond immediate emergencies, there are also the ongoing veterinary needs that every rescue dog must receive. Routine health care such as vaccinations, parasite treatment, and health checks are vital to protect not only the individual dog but also the wider rescue population. For Dobermanns and other large breeds, costs can be significantly higher due to their size and increased risk of breed-related health concerns. Heart investigations, orthopaedic issues, gastrointestinal problems, and behavioural-related medical assessments are not uncommon, and each one comes with a financial cost that must be met before a dog can safely move forward.

Veterinary treatment can also take a toll on the dogs themselves. Frequent vet visits, procedures, and recovery periods can be stressful, particularly for dogs who are already anxious or unsure after entering rescue. We work closely with veterinary professionals to ensure each dog is handled with care, patience, and empathy, often combining medical treatment with confidence-building and behavioural support. Recovery is rarely instant — it can take weeks or months of follow-up appointments, medication, and monitoring before a dog is physically and emotionally ready for a new home.

As a rescue charity, we don't turn a dog away because of the cost of their care, but the financial reality is daunting. Vet bills often run into thousands of pounds each month, and they must be paid regardless of how many donations come in. Every pound spent on veterinary care is a pound invested in a dog's future.

— giving them comfort, relief from pain, and the chance to live a full and happy life. Without financial support, our ability to help dogs in need is severely limited.

This is why donations and fundraising are so crucial to our work. Financial contributions directly support lifesaving treatment and allow us to say “yes” when a dog needs help urgently. Whether it’s a one-off donation, a regular contribution, or support through fundraising and merchandise, every bit helps us keep going. With your help, we can continue to give rescue dogs the medical care they need, the time they deserve to heal, and the opportunity to finally move on to a safe, loving home.

# 14 Reasons Why We Love The Dobermann



**1.**

## **Unmatched Loyalty**

Dobermanns form deep, unwavering bonds with their people and thrive on being close to their family.

**2.**

## **They Love With Their Whole Heart**

A Dobermann doesn’t do anything halfway — including affection.

**3.**

## **Incredibly Intelligent**

They are quick thinkers and eager learners who love mental challenges.

**4.**

## **Sensitive Souls**

Despite their strong appearance, Dobermanns are emotionally tuned in.

**5.**

## **Natural Protectors**

Dobermanns are instinctively watchful.

**6.**

## **They Just Want to Be With You**

Whether it’s a walk, the sofa, or the kitchen, Dobermanns want to be included.

**7.**

## **Elegant and Athletic**

Powerful yet graceful, they’re built for movement and stamina.

**8.**

## **Goofy When You Least Expect It**

Under the serious exterior is a wonderfully silly personality.

**9.**

## **Deeply Loyal to “Their People”**

Rescue bonds and adoption can create extraordinary trust.



10.

## Brilliant Working Dogs

Historically bred to work closely with humans, they love having a job.

11.

## Emotionally Supportive Companions

Dobermanns often sense when their people are struggling.

12.

## Strong but Gentle

With guidance, Dobermanns are respectful, and kind.

13.

## Each One Is an Individual

No two Dobermanns are ever the same.

14.

## They Teach Us What Love Really Means

Living with a Dobermann can change how people see loyalty, patience, and connection.

psst...don't  
forget, Valentines  
Day is on  
14<sup>th</sup> February

*This valentines day, give some love to a Dobermann in need*

# FOSTER HOMES NEEDED



Although we are predominantly kennel based, we are looking to strengthen our foster team. If you, or someone you know, can offer emergency, short-term, and/or long-term help, we would love to hear from you.

Fostering a Doberman is incredibly rewarding for both the dog and the foster carer. For the dog, a foster home provides stability, routine, and the chance to decompress in a calm, loving environment, helping them build confidence and learn home life skills that set them up for a successful adoption. For foster carers, it's a chance to make a real difference without a long-term commitment—watching a Doberman grow in confidence, form bonds, and show their loyal, affectionate nature is hugely fulfilling. Fostering also allows you to experience the breed, gain valuable handling and training experience, and play a vital role in giving a rescue dog the best possible start to their new future.

We are currently appealing for foster carers to help strengthen our foster team. While we are primarily kennel based, foster homes play a vital role in supporting our rescue, especially when dogs need a quieter, more settled environment or when we face emergencies. We are looking for compassionate people who can offer emergency foster help at short notice, short-term fostering, and also longer-term placements. Fostering helps dogs experience life in a home, build confidence, and prepare for adoption, and it also frees up vital kennel space so we can help more dogs in need. If you're able to offer a safe, loving home—whether for a few days or a few months—we would love to hear from you.





# Welcome to Our New Ambassadors: Nick Heyes & Fury

We are incredibly excited (and very proud) to officially welcome Nick Heyes, better known as Fury and Nick on Instagram, as an ambassador for our rescue. Alongside him, his wonderful Doberman Fury has accepted the very important role of Honorary Ambassadors — a title he wears extremely well!

Nick has been a passionate advocate for the breed, sharing the realities, joys, and challenges of life with a Doberman with honesty, humour, and heart. His content helps educate people about what these amazing dogs truly need, while also celebrating their loyalty, intelligence, and unmistakable personalities. We're so grateful to Nick for supporting our work and helping us shine a positive light on Dobermanns and rescue dogs alike.

Nick and Fury have built a strong following by showing real life with a Doberman — the adventures, the learning curves, and the incredible bond that comes with sharing your life with such a devoted breed.

Fury is not just a social media star; he's a brilliant example of the Doberman temperament. Together, Nick and Fury are helping to break down stereotypes and encourage responsible ownership, something that aligns perfectly with our mission.



We're thrilled to have Nick and Fury on board and can't wait to share more with you. Keep an eye on our newsletters and social media for future features, fun collaborations, and behind-the-scenes moments with our ambassador duo. A huge thank you again to Nick for supporting our rescue and helping us continue to advocate for Dobermanns in need. Here's to more fun, education, and Doberman love ahead!

# WORDSEARCH



Can you find these 7 Dobermann related words in the wordsearch?

**DOBERMANN**

**LOYAL**

**SMART**

**PROTECT**

**ELEGANT**

**ALERT**

**COMPANION**





*Only*  
**£10!**

**30**

**30-DAY**

# **DOG TRAINING CHALLENGE**

**Complete 30 days of dog training at your own pace. Start anytime. Self-led.**

***Rosette included!!***

Charitable fundraiser. T&Cs apply.

Keep reading to find out more!

We're excited to announce that our 30-Day Challenge will be launching soon! This is a fun, flexible way for you to spend some focused time training, bonding, and building confidence with your dog, all while supporting DRUE.

The challenge is designed to fit around real life and will be completely self-led, so you can take part in a way that works for you and your dog. We'll be sharing full details, including how to take part, on our social media and in upcoming newsletters once everything is ready to start.

Whether you're working on training, enrichment, or simply spending more quality time together, we hope it's something lots of you will enjoy getting involved in.

### **Challenge Format**

Participants complete 30 days of dog training with their dog. They do not need to complete 30 days consecutively. They may start anytime during the challenge period. Training activities are chosen from loose categories such as: Bonding, Life Skills, Enrichment, Tricks, and Confidence. It is fully self-led and honour-based — no submissions or proof required.

### **Payment & Entry Confirmation**

Entry fee: £10 (non-refundable, treated as a donation). Payment is made over the DRUE website. Entrants confirm their address for their rosettes to be delivered to.

### **Rosette System**

Everyone who pays receives a rosette, regardless of start/finish date. Rosettes are a thank you for supporting DRUE, while participants agree to complete their 30 days on the honour system.

### **Postage**

UK residents only due to postage limitations. Rosettes are posted in monthly batches. Delivery may take up to 8 weeks after your entry (DRUE processing time/monthly batches plus potential delivery delays outside of our control).

T&C's: Open to UK residents aged 18+. Entry fees are donations and non-refundable. The challenge is self-led and honour-based; no proof required. Entrants agree to work towards completing 30 days of training. Rosettes are posted monthly and delays may occur. DRUE is not liable for injuries, losses, or damages arising from training activities. Personal details are used solely for challenge administration and postage. DRUE may amend or withdraw the challenge if required (rosettes will still be honoured). DRUE offers participants the option to send in videos or photos from their 30-day challenge so we can feature them on DRUE's social media pages. Participants may send one or more videos/photos during their challenge. Content can include training clips, tricks, enrichment activities, confidence-building moments, a "graduation" clip near the end/once rosette has been delivered. DRUE will share selected clips as highlights. DRUE are not obligated to post everything. Sending photos and/or videos does not affect rosette eligibility. Photos and videos sent to DRUE does not act as proof of completion. It is purely optional and for fun. No judging or feedback is required from DRUE. does not affect rosette eligibility. By voluntarily sending DRUE photos or videos, participants give permission for them to be used on our social media platforms. Sharing content is completely optional. DRUE Is Not responsible for monitoring, verifying, or judging training. Guaranteeing exact postal delivery dates. Providing bespoke training advice. Handling international entries.



# Our Work Beyond The Dobies

While the Dobies are always at the heart of what we do, there's been plenty happening behind the scenes to keep everything running smoothly.

Pauline has been busy with the day-to-day admin that keeps DRUE moving, organising where dogs are going and when new arrivals are coming in. We've also had a mix of future-planning meetings — with plenty of laughs along the way — as we look ahead to what's next.

Gary has been spending time helping out at the kennels, and plans are well underway for our exciting annual DRUE Day, with more information to follow very soon. We've also been working on the upcoming 30-day challenge, which has its own page, so we won't give too much away here just yet.

Behind the scenes, Paul has also been spending time building relationships with businesses that are interested in supporting our work through corporate partnerships. These conversations are about finding the right fit and creating partnerships that are genuinely beneficial on both sides. If you, or someone you know, might be interested in exploring a partnership with us, we'd love to hear from you — we have a lot to offer in return and are always open to starting conversations with organisations that share our values.

This is just a snapshot of what's been keeping us busy — there's always a lot happening beyond what you see, and we're so grateful to everyone who helps make it all possible.

I would like to say a huge and heartfelt thank you to Dianne Worby for her dedication and hard work in producing DRUE Life over the past three years. Dianne has put so much time, care, and commitment into keeping our supporters informed, engaged, and connected to our work, and we are incredibly grateful for everything she has done. I'd also like to personally thank Dianne for trusting me to take the newsletter forward from here. This is my very first edit of DRUE Life, and I've enjoyed every part of putting it together. I'm really looking forward to continuing the newsletter and sharing more of our stories.

Thank you,

**Darcy**

